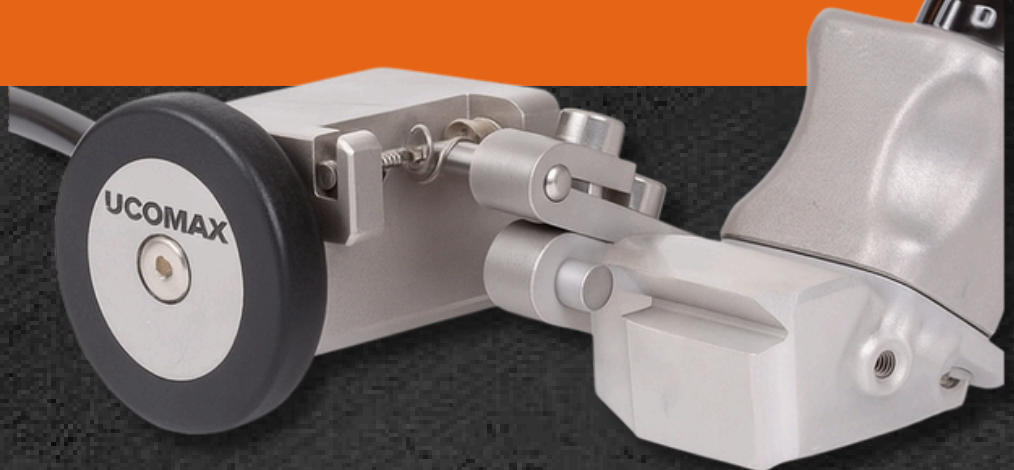


# ENCODER

## SMALL WHEEL ENCODER AND C CLAMP

The Small-Wheel encoder is used for the positioning and dimensioning of defects in the scan axis, synchronizing data acquisition with probe movement.

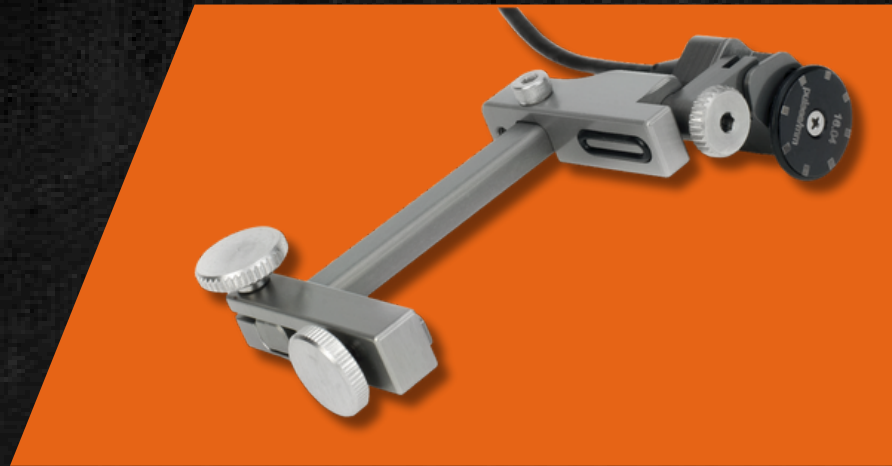
The Mini-Wheel encoder is waterproof and compatible with the manual scanners as well as standard PA wedges. Use the included bracket kit to mount the encoder directly on the wedge or, for increased versatility and ease of use, mount the encoder on our Universal Holder.



## FEATURES

---

- Waterproof (IP68)
- Small dimensions
- 12 steps/mm resolution
- Rubber wheel offers increased traction on surface temperatures up to 150°C
- Sealed bearing for long lasting smooth wheel rotation
- Strain relief for increased cable reliability
- Spring-loaded system for constant contact with the surface.
- Custom made magnetic wheels can be attached in order to further ensure consistent surface contact and reduce errors during data acquisition
- Two M3 threaded holes on top of the casing for rigid attachment to custom assemblies



## U CLAMP HOLDER

---

Use the Universal Holder to attach the Small-Wheel encoder or the wire encoder in up to three different orientations to most phased array (PA) wedges. Installation is quickly and easy, and no tools are required. The Universal Holder can also be attached directly to a phased array probe, enabling contact inspection when the use of a wedge is difficult.



989/16/2, FIRST FLOOR NEAR GAYATRI ICE INDUSTRIES,  
MAKARPURA,VADODARA, GUJARAT - 390010



[sales@ucomax.com](mailto:sales@ucomax.com)



[www.ucomax.com](http://www.ucomax.com)



+91 63588 33112